

Polytex[®] + / Comtex[®] + / Architec 400[®]

POLYFAB[™]

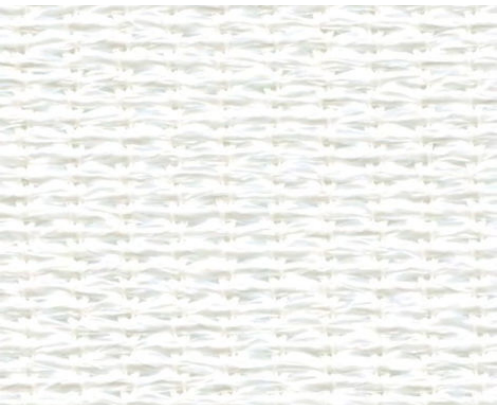
Polytex[®]+

Roll Width: 150 inches • Weight: 7oz/yard² • Put Up: 33 yards, center folded

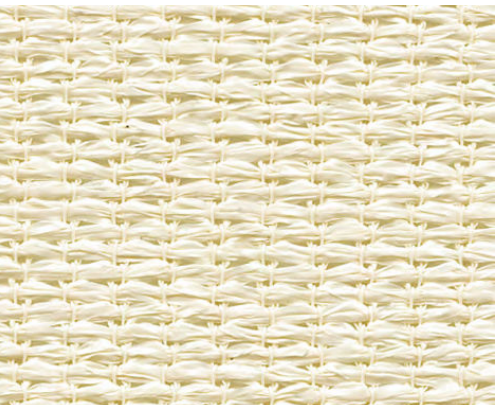
Polytex[®]+ is made of High-Density Polyethylene (HDPE) fire retardant shade fabric, manufactured with monofilament and tape yarns. New and improved pigmentation allows for extended color life. Polytex+ is heat-set reducing curling and shrinkage offering improved dimensional stability. Designed for architectural shade sails and outdoor shade structures like canopies and patio shade sails where sun protection is needed. It offers a high-strength-to-weight ratio, mildew resistance, and 12-year warranty against UV degradation. This lightweight shade cloth is lead and phthalate free.

FR Standards Met: NFPA 701 TM 2

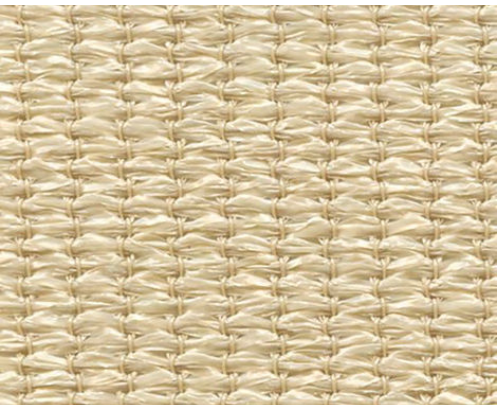
Colors are representative only. Small variations in shade should be anticipated and are with commercial tolerances.



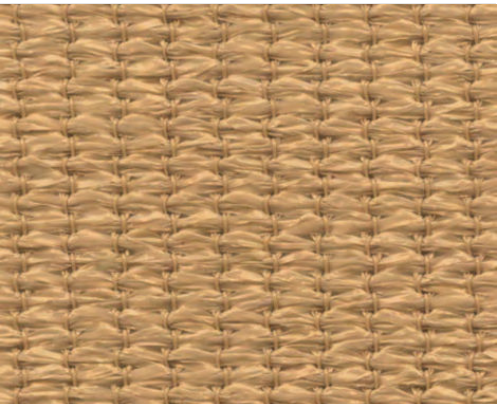
White
865193



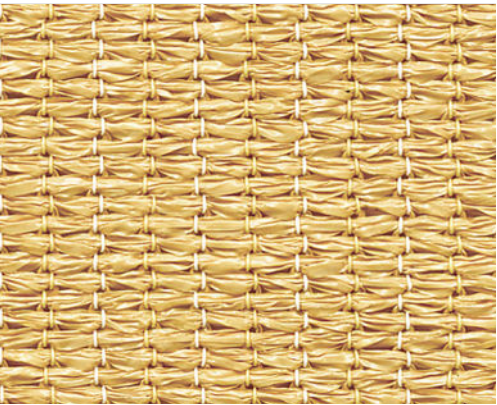
Porcelain
865175



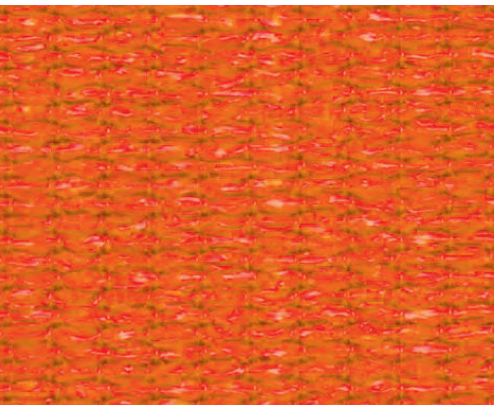
Paperbark
865168



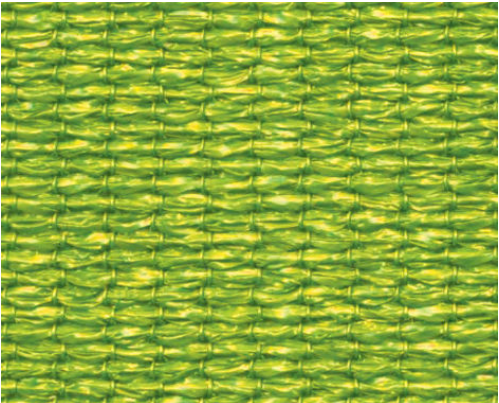
Cappuccino
865189



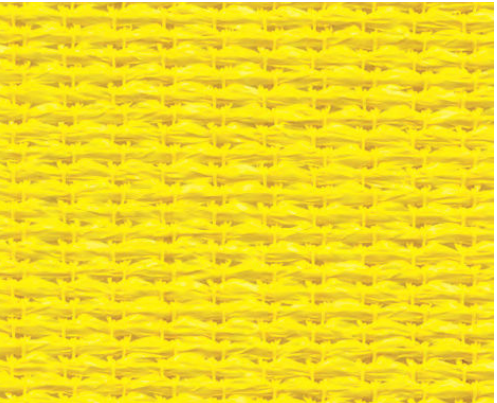
Sandstone
865167



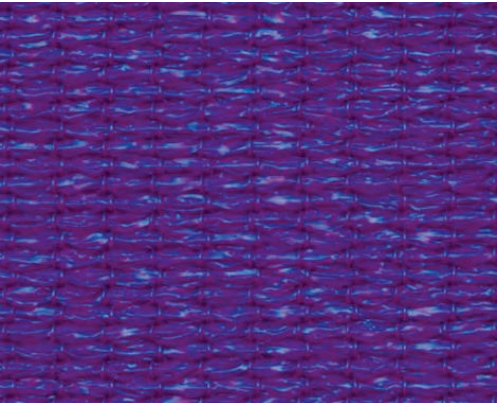
Orange
865290



Lime
865196



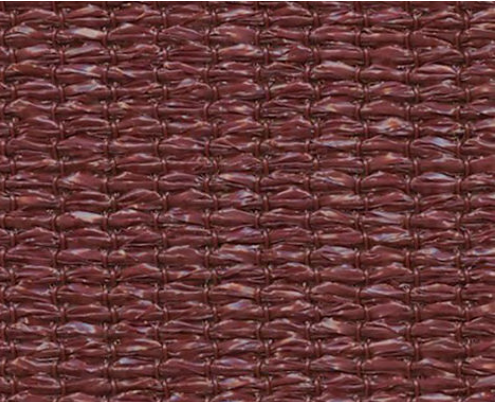
Lemon
865197



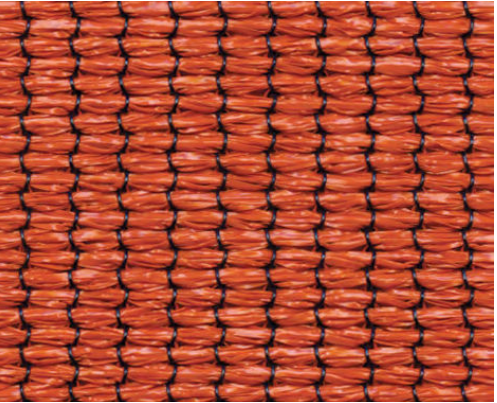
Grape
865195



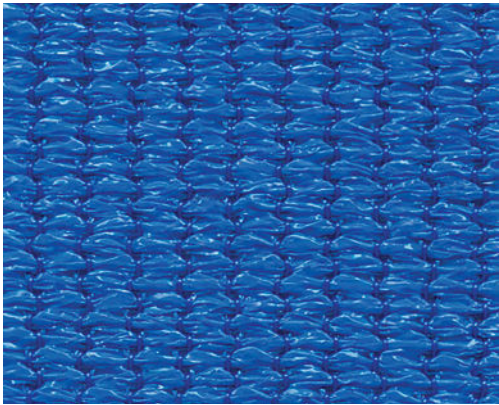
Red
865187



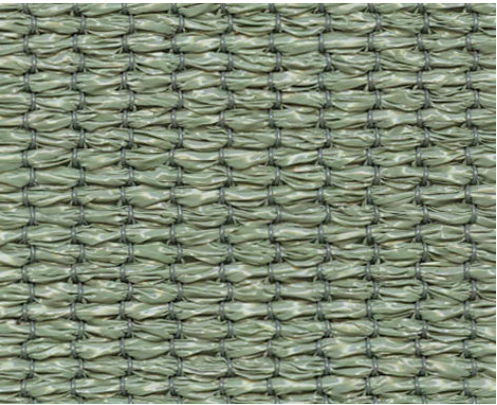
Manor Red
865188



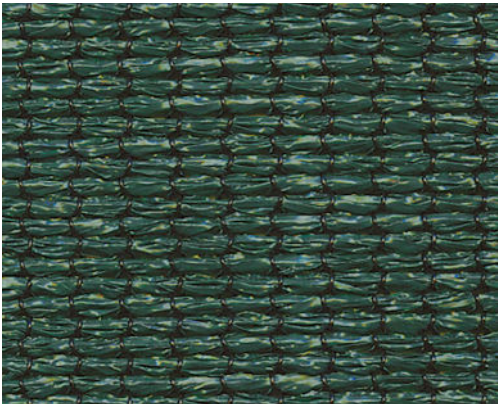
Bronze
865179



Aquamarine
865163



Sage
865171



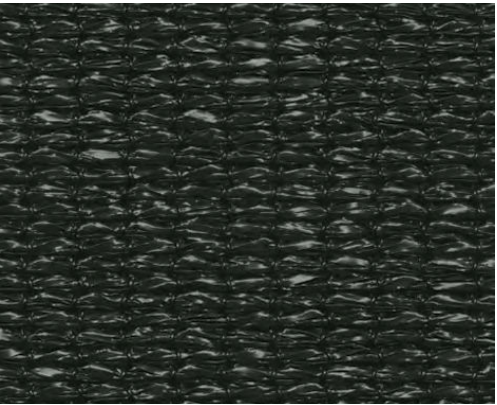
Midnight Green
865161



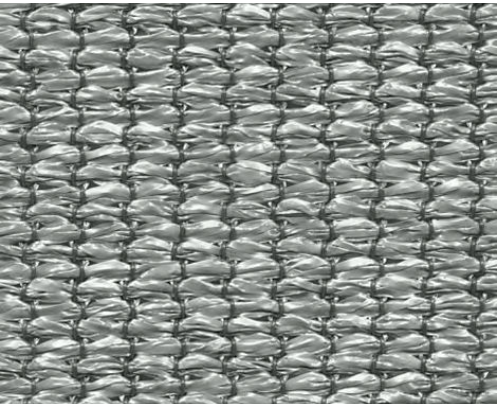
Navy Blue
865165



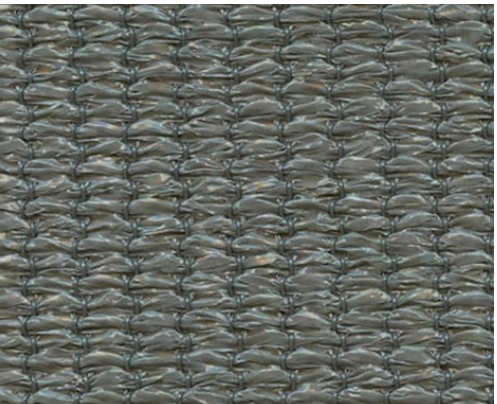
Cafe Noir
865191



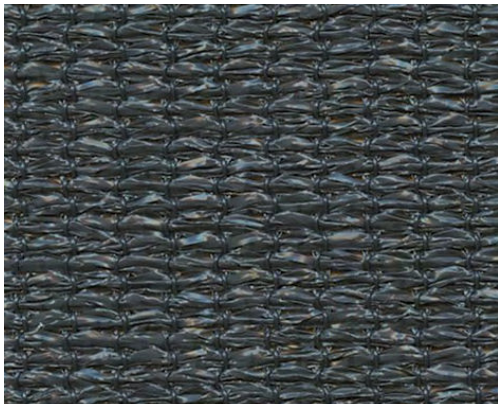
Black
865181



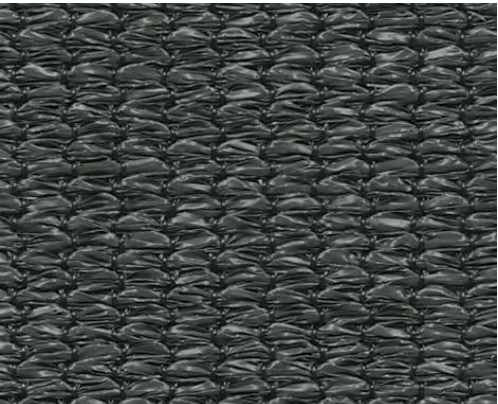
Silver
865185



Woodland Grey
865174



Monument
865176



Slate Gray
865173

Comtex[®]+

Roll Width: 150 inches • Weight: 10oz/yard² • Put Up: 33 yards, center folded

Comtex[®]+ is a knitted High-Density Polyethylene (HDPE) fire retardant shade fabric. Comtex+ is heat-set allowing for less curling and shrinkage, offering improved dimensional stability. Designed for medium-to-large architectural shade sails, tension membrane structures and commercial shade structures. This versatile fabric performs excellency for both commercial and residential applications. New and improved pigmentation allows for extended color life. It delivers lasting protection from the sun’s rays with a 12-year warranty against UV degradation. This shade cloth is lead and phthalate free.

FR Standards Met: NFPA 701 TM 2

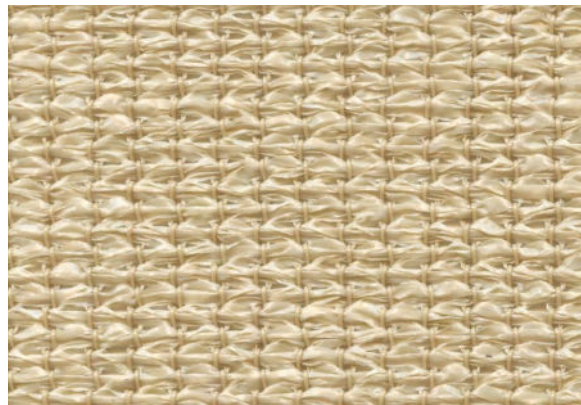
Colors are representative only. Small variations in shade should be anticipated and are with commercial tolerances.



White
865283



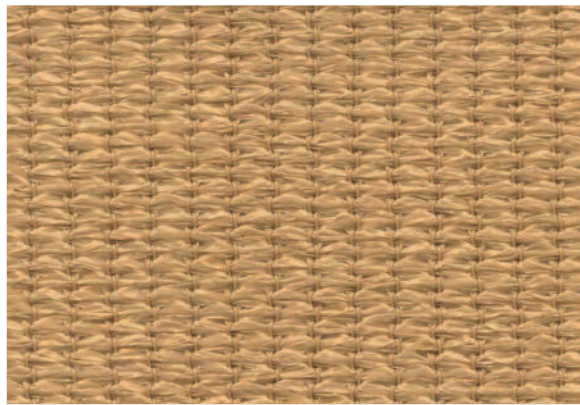
Porcelain
865265



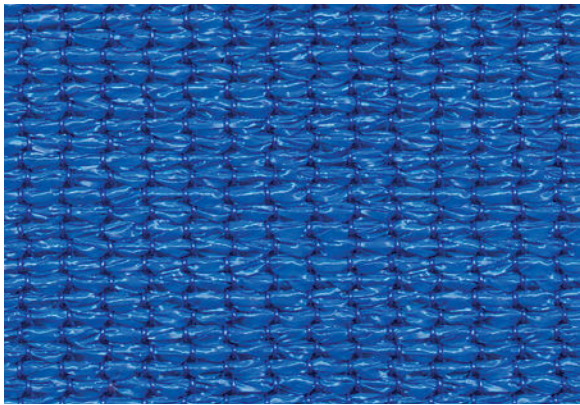
Paperbark
865285



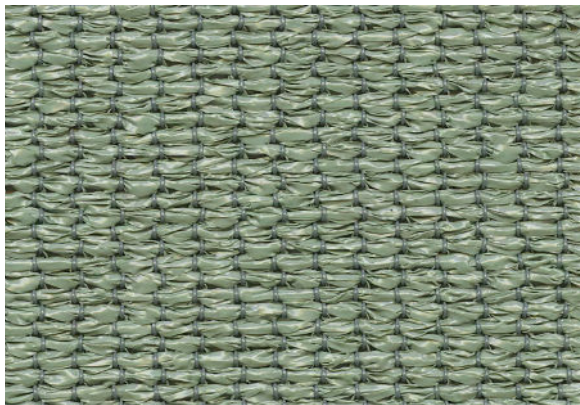
Sandstone
865257



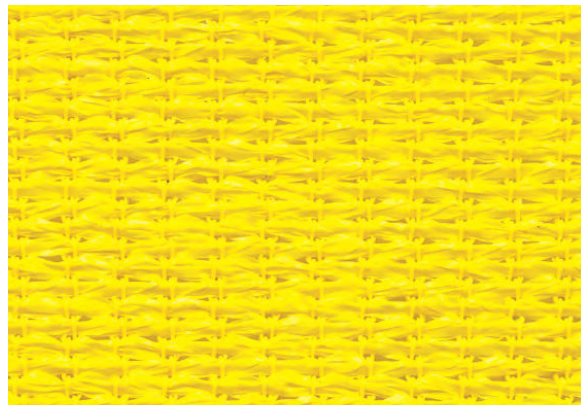
Cappuccino
865279



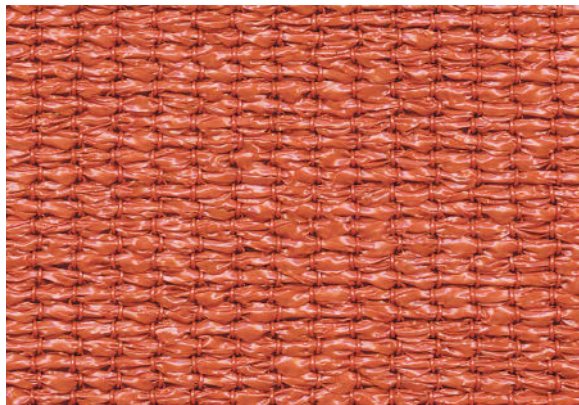
Aquamarine
865253



Sage
865261



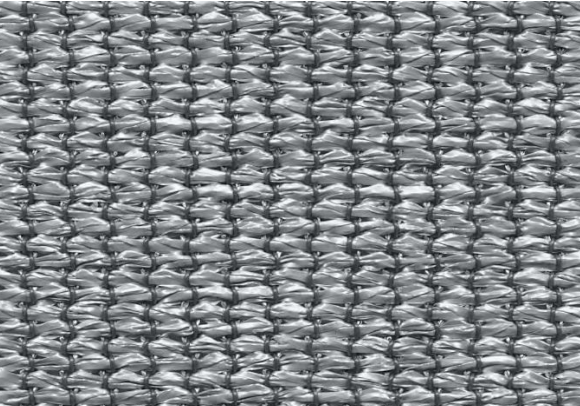
Lemon
865287



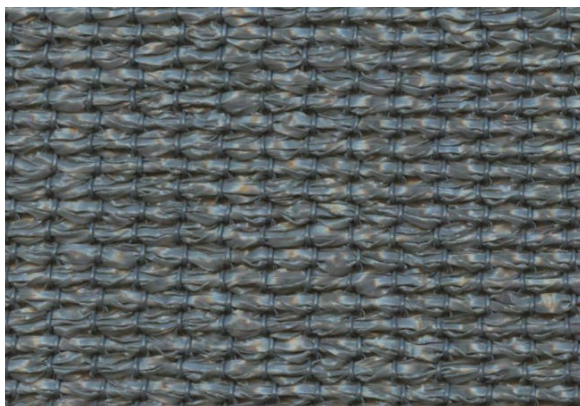
Rust
865259



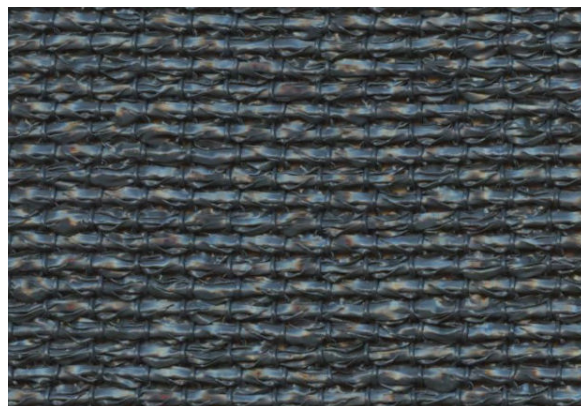
Red
865277



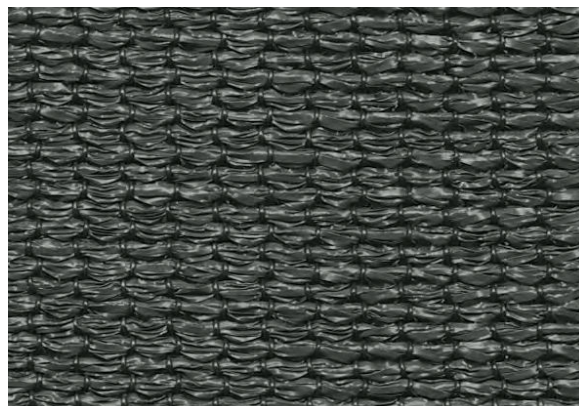
Silver
865275



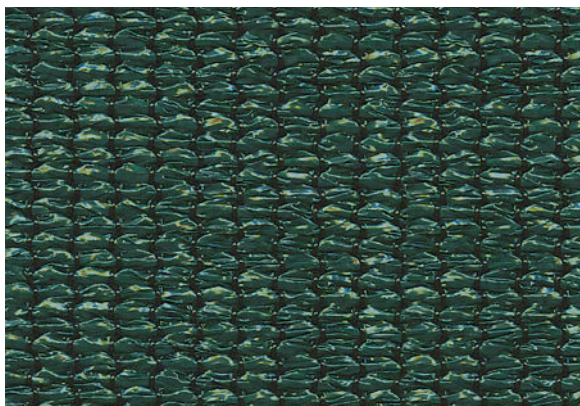
Smoke
865289



Monument
865288



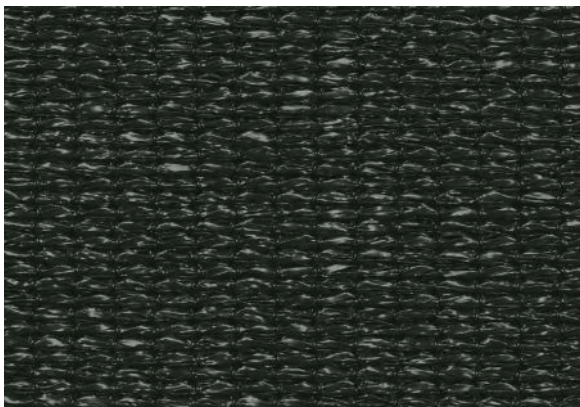
Slate Gray
865263



Midnight Green
865251



Navy Blue
865255



Black
865271



Architec 400®

Roll Width: 150 inches • Weight: 12 oz/yard²
Put Up: 55 yards, not folded

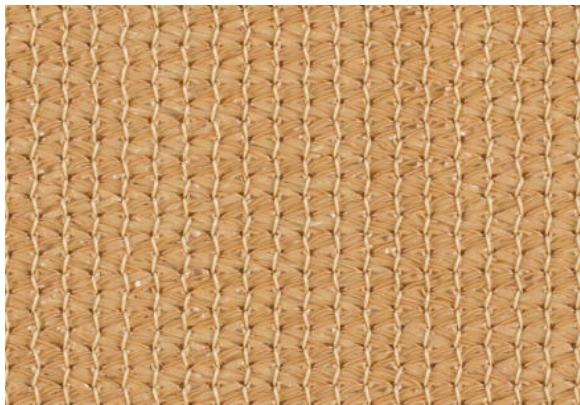
Architec 400® is a high-strength, UV-stabilized knitted shade cloth. It is designed for large, commercial tension structures and shade sails. This High-Density Polyethylene (HDPE) shade fabric incorporates the latest in ultraviolet stabilizers that provide color consistency and colorfastness. Architec 400 has a 15-year warranty against UV degradation and is lead and phthalate free.

FR Standards Met: ASTM E-84 Class 1 or A rating

Colors are representative only. Small variations in shade should be anticipated and are with commercial tolerances.



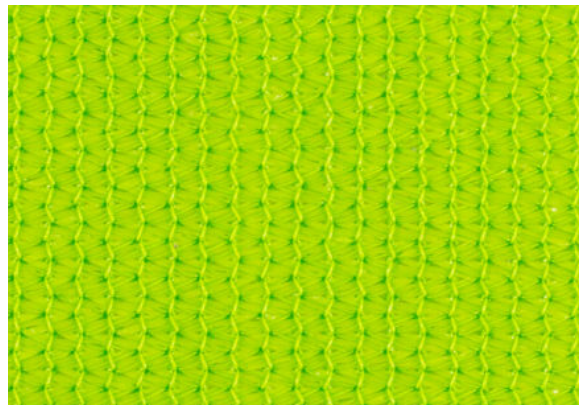
Porcelain
865150



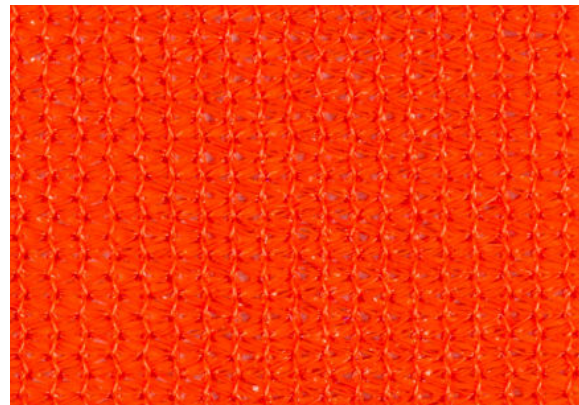
Cappuccino
865143



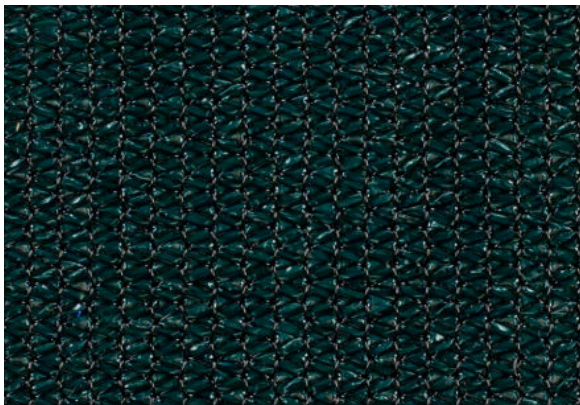
Lemon
865145



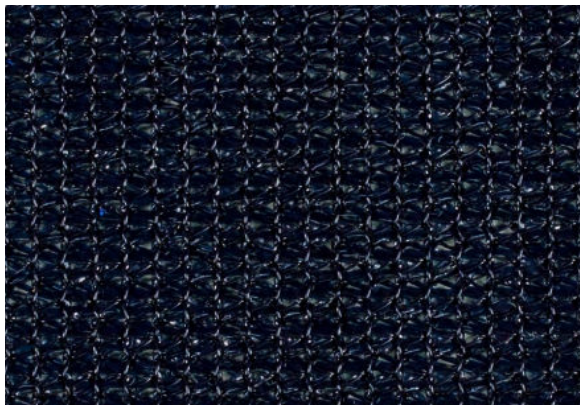
Lime
865146



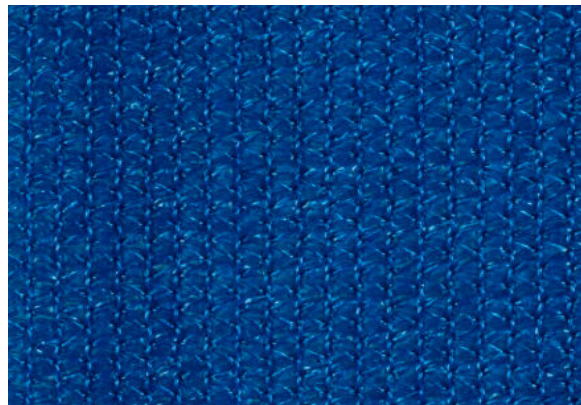
Orange
865149



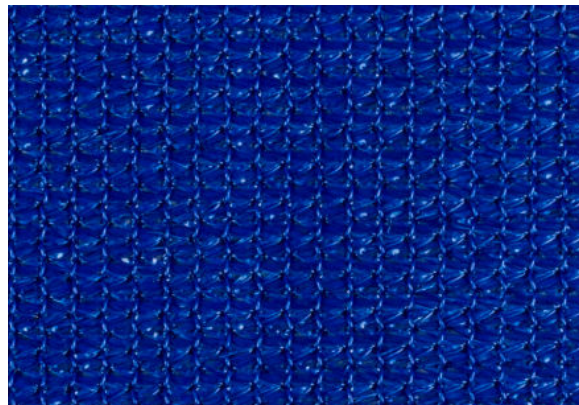
Midnight Green
865147



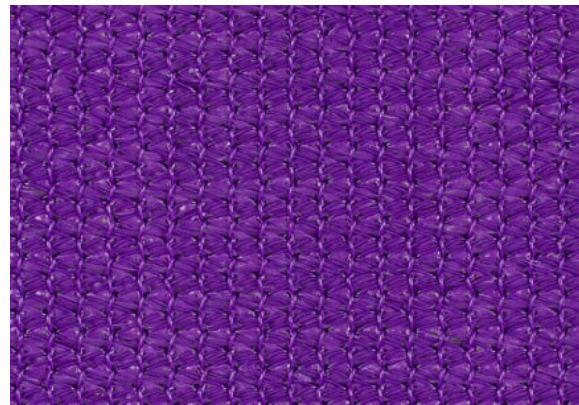
Navy Blue
865148



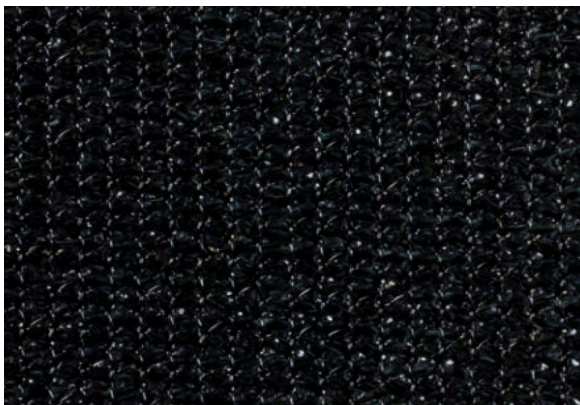
Turquoise
865153



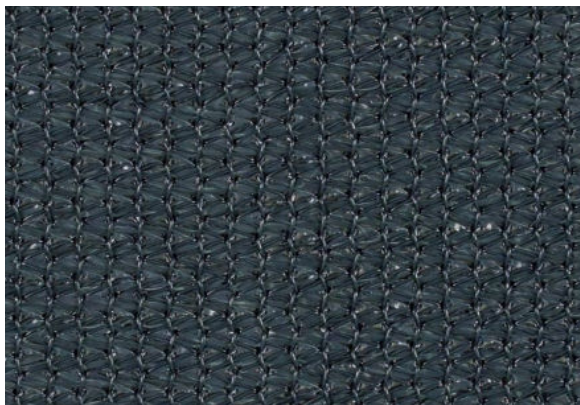
Aquamarine
865140



Grape
865144



Black
865142



Slate Gray
865151

	Polytex®+	Comtex®+	Architec 400®
COLORS	SHADE FACTOR %		
Aquamarine	91	85	91
Black	97	95	97
Bronze	87	-	-
Café Noir	96	-	-
Cappuccino	87	90	87
Lemon	72	75	69
Grape	79	-	78
Lime	79	-	88
Midnight Green	91	94	93
Navy Blue	93	96	92
Orange	84	-	85
Porcelain	74	80	73
Red	88	90	-
Rust	-	87	-
Sage	92	93	-
Sandstone	88	88	-
Silver	88	94	-
Slate Gray	94	97	95
Turquoise	-	-	85
White	76	77	-
Paperbark	82	83	-
Monument	96	94	-
Smoke	-	90	-
Woodland Grey	91	-	-
Manor Red	93	-	-

Polytex®+

FIRE STANDARD COMPLIANCE	NFPA 701 TM 2 (2019), ASTM E-84 (CLASS 1 OR A RATING)
--------------------------	---

Technical Specifications	Units	Warp	Weft
Breaking Force (ASTM D-5034)	lbs	120	296
Elongation at Break (ASTM D-5034)	%	75	61
Tearing Strength (ASTM D-2261)	lbs	17	25
Mullen Burst (ASTM D-3786)	lbs/in	Face	444
Ball Burst (ASTM D-3787)	lbf	Face	293

Comtex®+

FIRE STANDARD COMPLIANCE	NFPA 701 TM 1 (2019), ASTM E-84 (CLASS 1 OR A RATING)
--------------------------	---

Technical Specifications	Units	Warp	Weft
Breaking Force (ASTM D-5034)	lbs	268	340
Elongation at Break (ASTM D-5034)	%	110	75
Tearing Strength (ASTM D-2261)	lbs	31	34
Mullen Burst (ASTM D-3786)	lbs/in	Face	548
Ball Burst (ASTM D-3787)	lbf	Face	418

Architec 400®

FIRE STANDARD COMPLIANCE	ASTM E-84 (CLASS 1 OR A RATING)
--------------------------	---------------------------------

Technical Specifications	Units	Warp	Weft
Breaking Force (ASTM D-5034)	lbs	342	270
Elongation at Break (ASTM D-5034)	%	87	96
Tearing Strength (ASTM D-2261)	lbs	41	38
Mullen Burst (ASTM D-3786)	lbs/in	Face	593
Ball Burst (ASTM D-3787)	lbf	Face	450+



Need help?
Your customer care team is just a call or click away.

800.786.1876 | trivantage.com

TRIVANTAGE® IS A REGISTERED TRADEMARK OF GLEN RAVEN, INC.
POLYTEX®, COMTEX®, ARCHITEC 400® ARE REGISTERED AND POLYFAB™ IS A TRADEMARK OF POLYFAB USA. 998552